

PLANT SCHEDULE

Botanical name	Hgt	Spq	Qty	Size
Trees				
Corymbia citriodora	Lemon Scented Gum	20m	13	100L
Shrubs				
Callistemon 'Wildfire'	700mm	500mm	50	200mm
Photinia Red Robin	700mm	500mm	270	25L
Raphiolepis 'Cosmic Pink'	700mm	500mm	90	200mm
Raphiolepis 'Cosmic White'	700mm	500mm	90	200mm
Syracium 'Royal Flame'	2m	700mm	115	200mm
Viburnum tinus	1m	700mm	60	200mm
PLANTER BOXES				
Gazania Pink	500mm	5/m2	100	150mm
Pelargonium	500mm	5/m2	190	150mm
Grasses + Groundcovers				
Blechnum amblyum	700mm	5/m2	200	125mm
Blechnum minus	700mm	5/m2	250	125mm
Lomandra 'Katie Belles'	1m	6/m2	1220	125mm

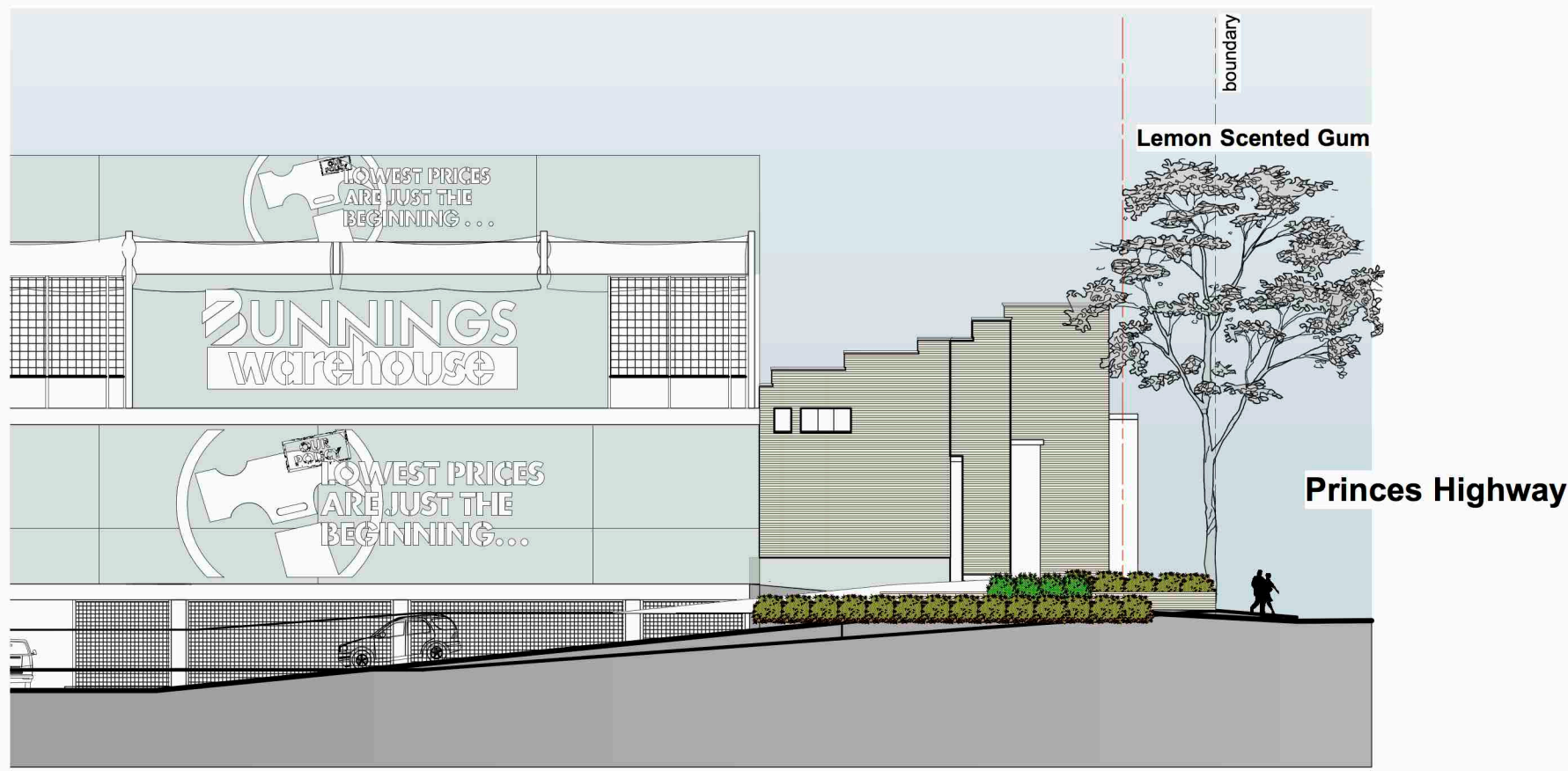
EXISTING TREE SCHEDULE

NOTE - Refer to Arborist Report: ABEL ECOLOGY, April 2015, for full report & description								
# Species	Hgt	Diam. at base (cm)	DBH (cm)	Condition	TPZ	SRZ	Comments	
				Vitality	M	M		
1 Melaleuca bracteata 'Revolution green'	5	33	45	F	F	3.96	2.37	TO BE REMOVED
2 Melaleuca bracteata 'Revolution green'	5	36	44	F	F	4.32	2.34	TO BE REMOVED
3 Melaleuca bracteata 'Revolution green'	5	30	46	P	F	3.6	2.39	TO BE REMOVED
4 Melaleuca bracteata 'Revolution green'	4	29	44	P	P	3.48	2.34	TO BE REMOVED
5 Melaleuca bracteata 'Revolution green'	5	31	42	F	P	3.72	2.3	TO BE REMOVED
6 Melaleuca bracteata 'Revolution green'	6	30	48	F	P	3.6	2.43	TO BE REMOVED
7 Melaleuca bracteata 'Revolution green'	4	38	50	F	P	4.56	2.47	TO BE REMOVED
8 Harasphyllum cafferum	9	90 at 1m	96	E	G	10.8	3.25	TO BE REMOVED
9 Araucarium rostratum	7	25	46	G	G	3	2.39	TO BE REMOVED
10 Acmena smithii	5	7, 7, 9	16	G	G	2	1.53	TO BE REMOVED
11 Corymbia maculata	8	13	35	G	F	1.56	2.13	TO BE REMOVED
12 Elaeocarpus reticulatus	4	8	13	G	G	0.96	1.4	TO BE REMOVED
13 Acmena smithii	4	8, 7	15	G	G	2	1.49	TO BE REMOVED
14 Elaeocarpus reticulatus	5	9	11	E	G	1.08	1.31	TO BE REMOVED
15 Acmena smithii	5	9	15	G	G	1.08	1.49	TO BE REMOVED
16 Acmena smithii	5	8, 6, 7	17	G	G	2	1.57	TO BE REMOVED
17 Casuarina cunninghamiana	5	16	26	F	P	1.92	1.88	TO BE REMOVED
18 Casuarina cunninghamiana	9	30	46	G	P	3.6	2.39	TO BE REMOVED
19 Casuarina cunninghamiana	13	29	56	G	F	3.48	2.59	TO BE REMOVED
20 Casuarina cunninghamiana	8	11	19	P	G	1.32	1.65	TO BE REMOVED
21 Corymbia maculata	16	35	54	G	F	4.2	2.55	TO BE REMOVED
22 Corymbia maculata	9	25	34	G	F	3	2.1	TO BE REMOVED
23 Corymbia maculata	12	23	31	G	F	2.76	2.02	TO BE REMOVED
24 Corymbia maculata	15	31	44	G	F	3.72	2.34	TO BE REMOVED
25 Corymbia maculata	15	32	44	G	G	3.84	2.34	TO BE REMOVED
26 Corymbia maculata	15	35	51	G	G	4.2	2.49	TO BE REMOVED
27 Corymbia maculata	12	23	30	F	G	2.76	2	TO BE REMOVED
28 Corymbia maculata	16	39	48	G	G	4.68	2.43	TO BE REMOVED
29 Corymbia maculata	11	31	45	G	G	3.72	2.37	TO BE REMOVED
30 Corymbia maculata	12	38	56	G	E	4.56	2.59	TO BE REMOVED
31 Corymbia maculata	11	26	32	F/P	F	3.12	2.05	TO BE REMOVED
32 Corymbia maculata	13	45	58	G	G	5.4	2.63	TO BE REMOVED

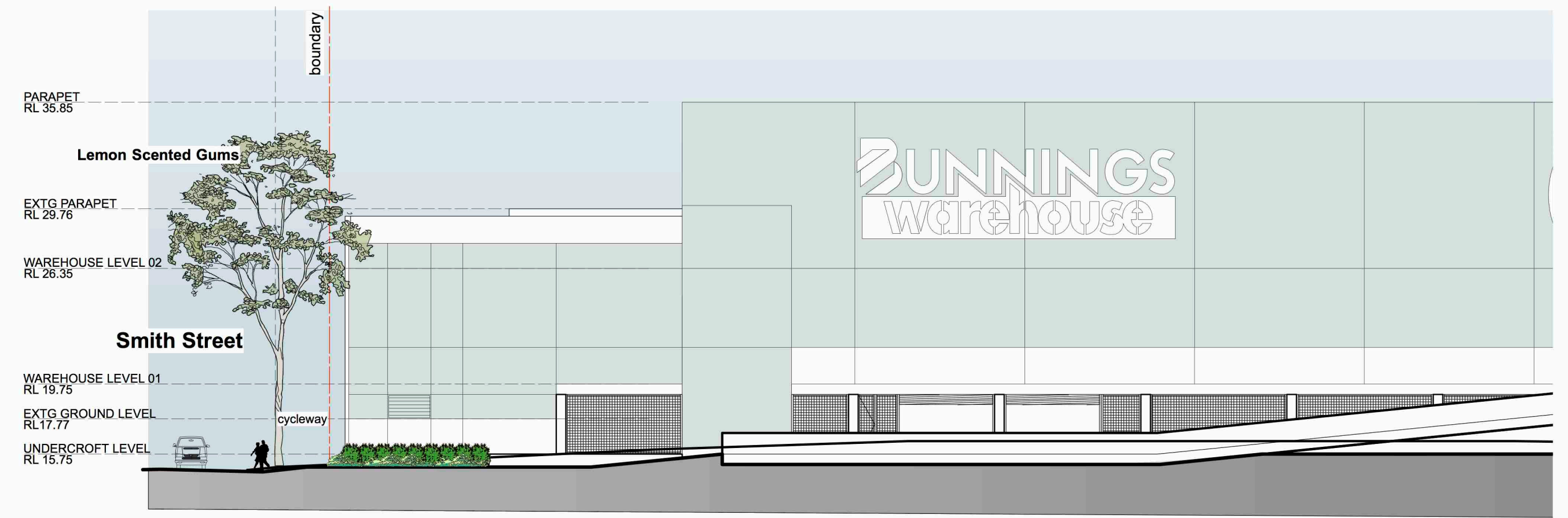
KEY

- EXISTING TREES TO BE RETAINED
- EXISTING TREES TO BE REMOVED
- NEW TREES
- SHRUBS
- GROUNDCOVERS
- PLANTING AREAS
- TURF
- PAVING

Note: Where mass planting abuts turf install timber edge as specified.



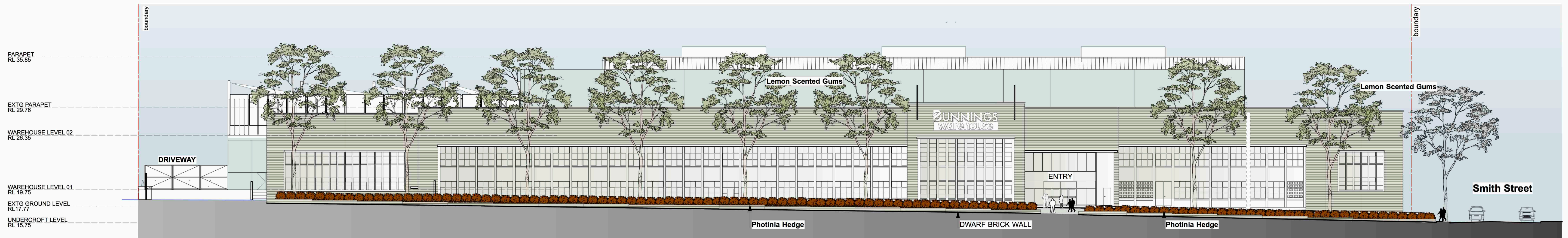
4 NORTH ELEVATION - part
1:250



2 EAST ELEVATION - part
1:250



3 SOUTH ELEVATION
1:250



1 WEST ELEVATION
1:250

revision	description	date
I	REVISED DA ISSUE	07/12/2017
H	REVISED DA ISSUE	27/03/2017
G	SMITH STREET FRONTAGE PLANTS REV'D	12/01/2016
F	ENTRY PATH ADDED	10/12/2015
E	DA ISSUE	01/07/2015
D	COORDINATION ISSUE	30/06/2015
C	COORDINATION ISSUE	26/06/2015
B	COORDINATION ISSUE	25/06/2015
A	PRELIMINARY ISSUE	22/06/2015

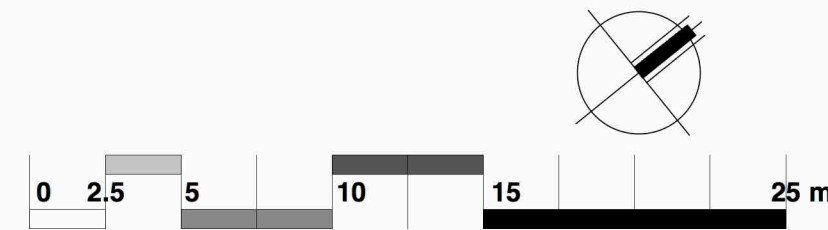
client:



architect:



landscape architect:



project:

Proposed Bunnings Tempe
728 - 750 Princes Highway
Tempe NSW 2044

LANDSCAPE ELEVATIONS

scale :

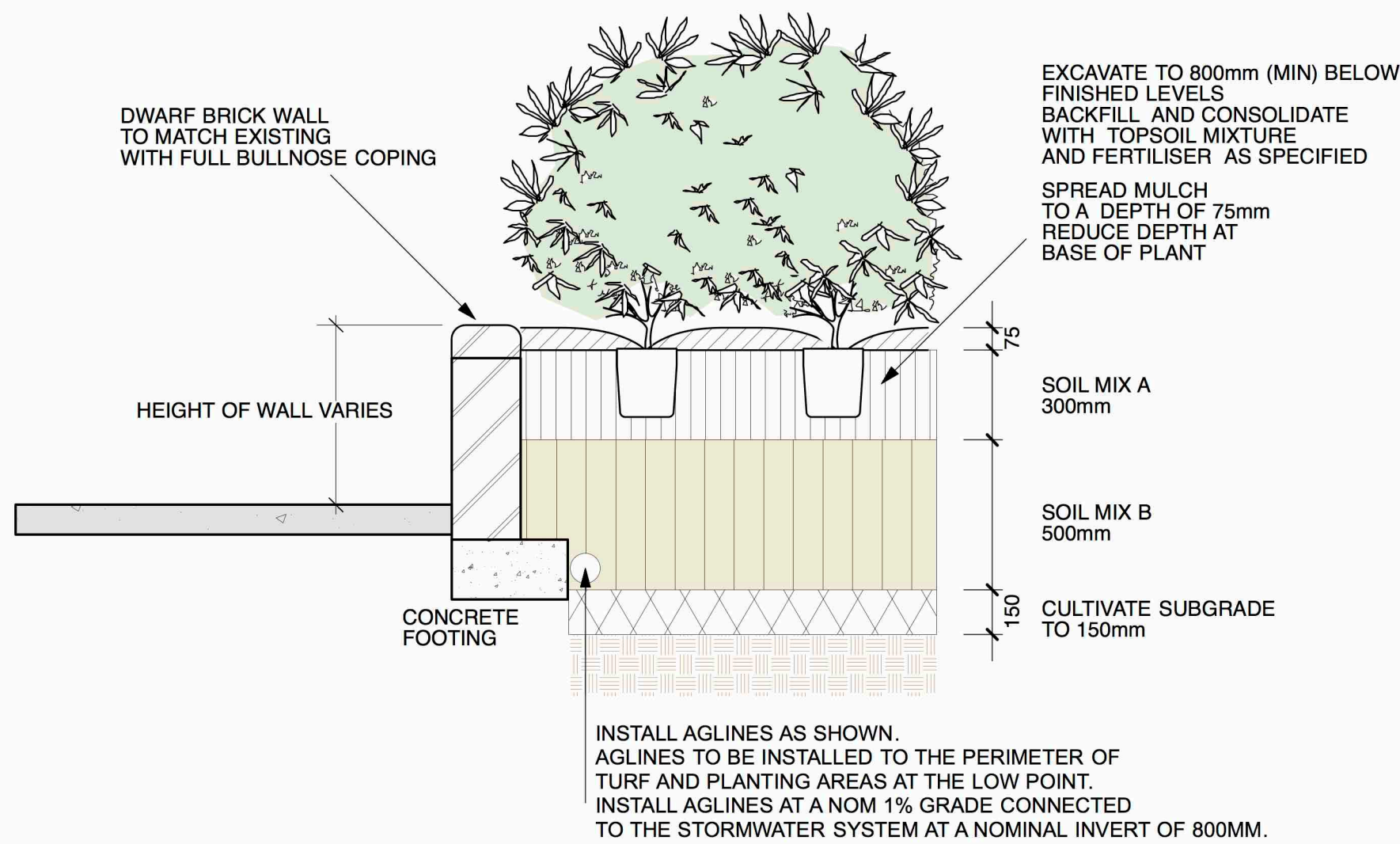
1:250 @ A1
1:500 @ A3

date :

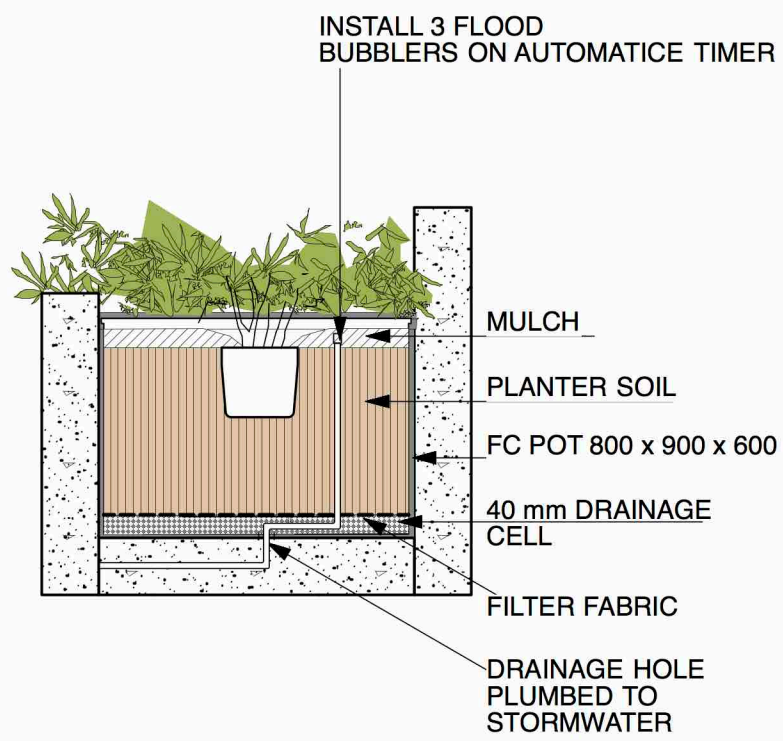
15/06/2015

drawing # :

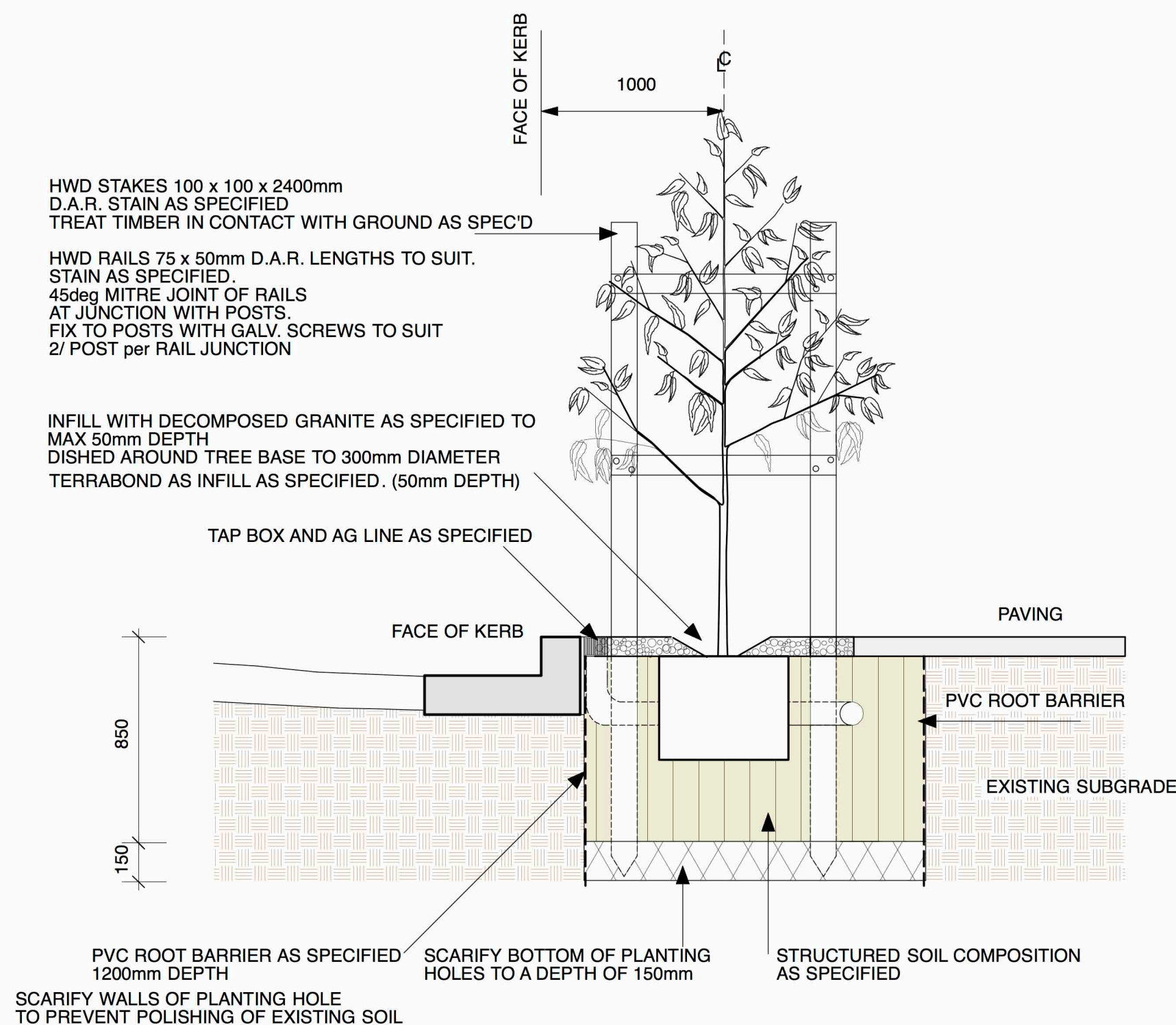
2212 LP - 02



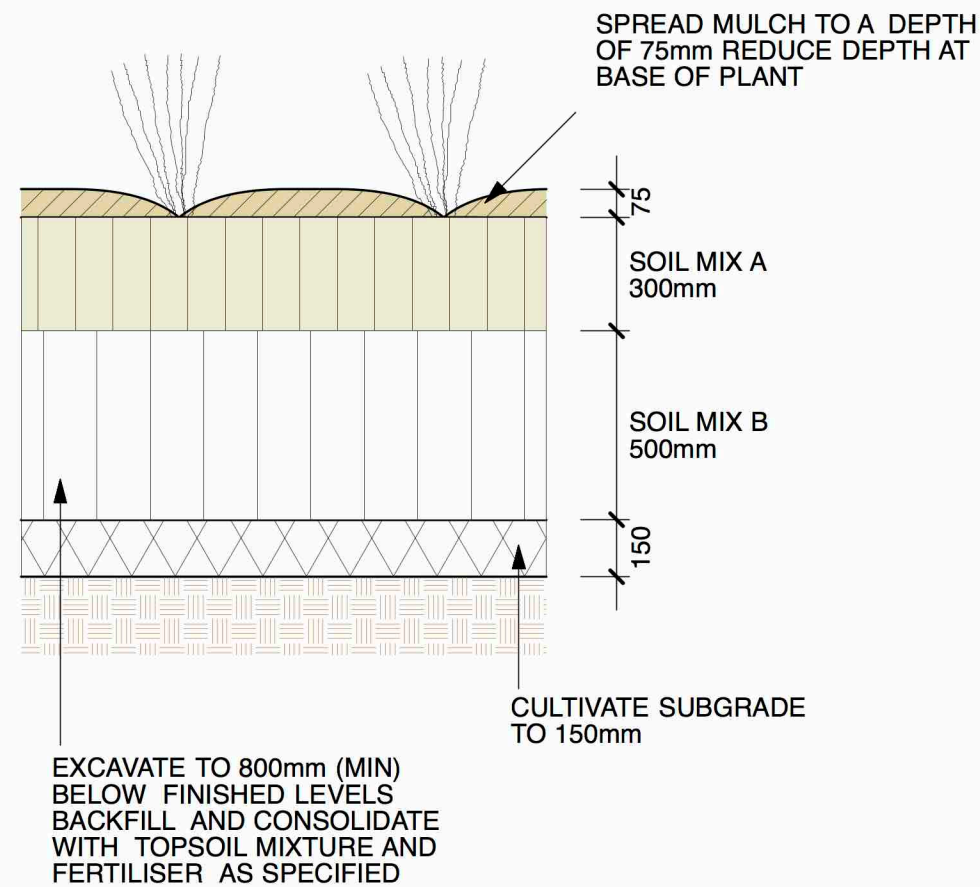
A MASS PLANTING - RETAINING WALL
1:20@A1



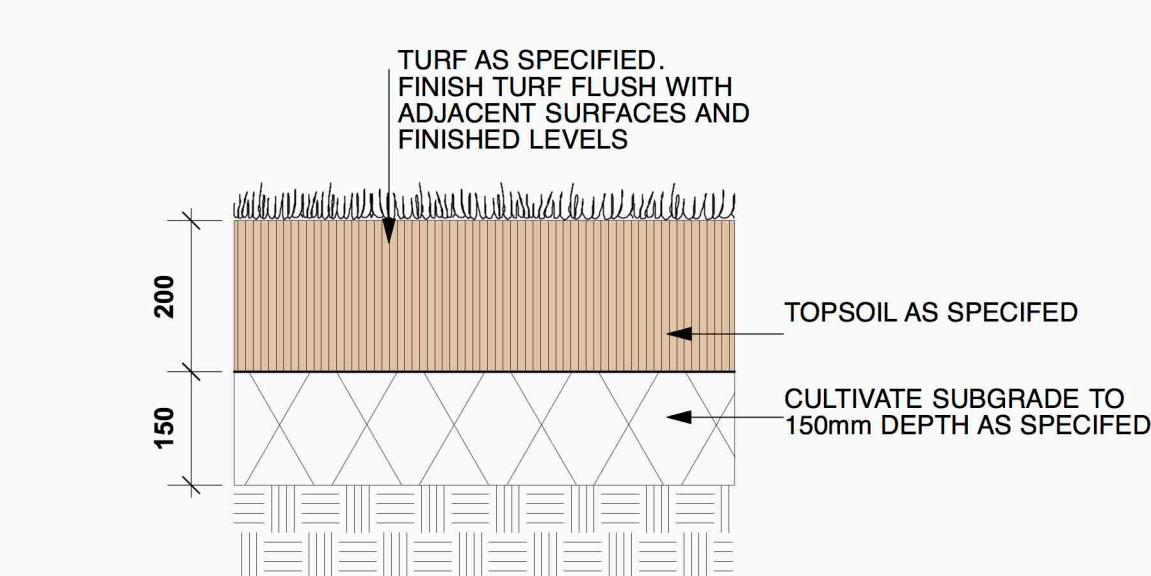
E PLANTER DETAIL
1:20@A1



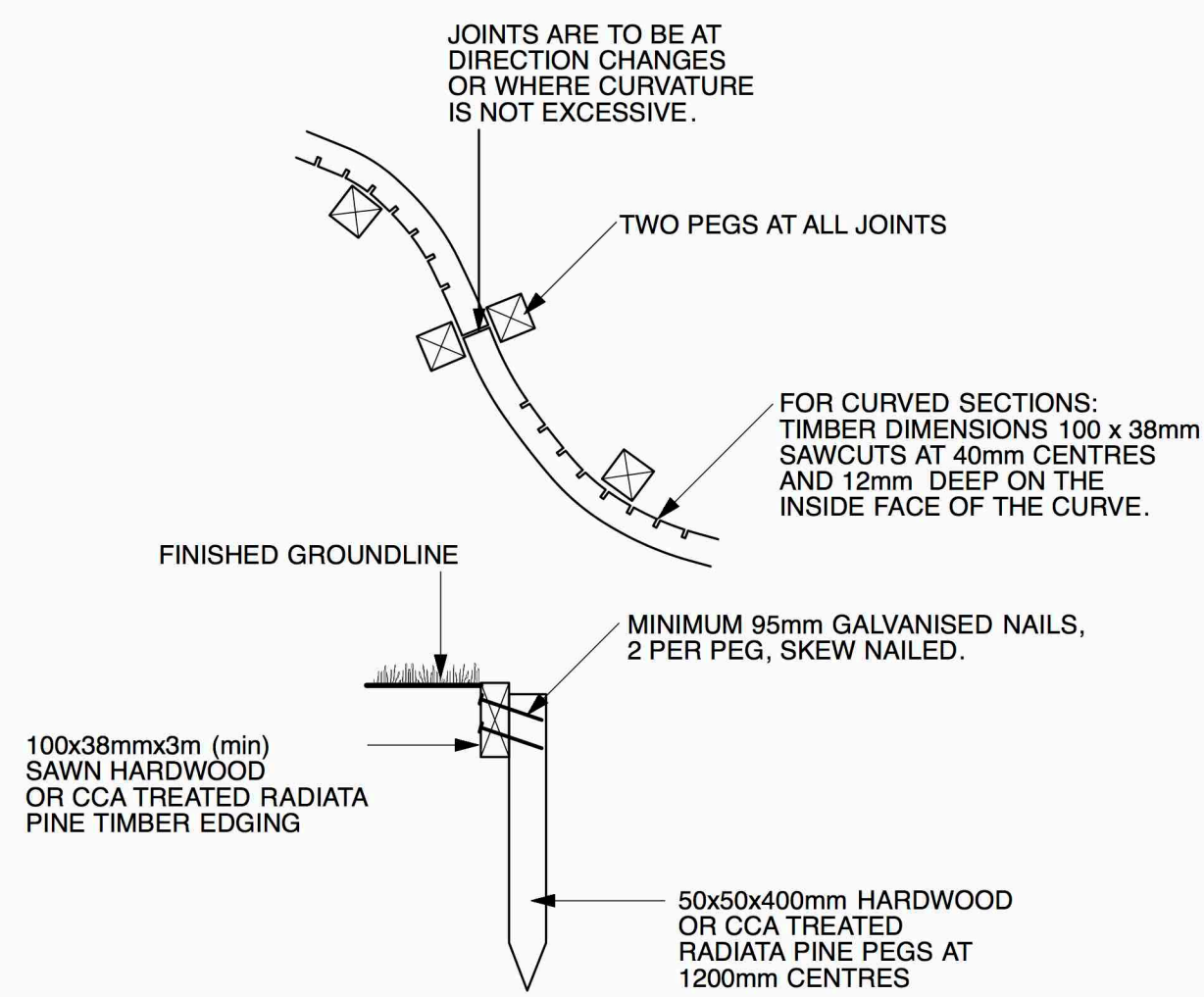
F STREET TREE PIT IN PAVING
1:20@A1



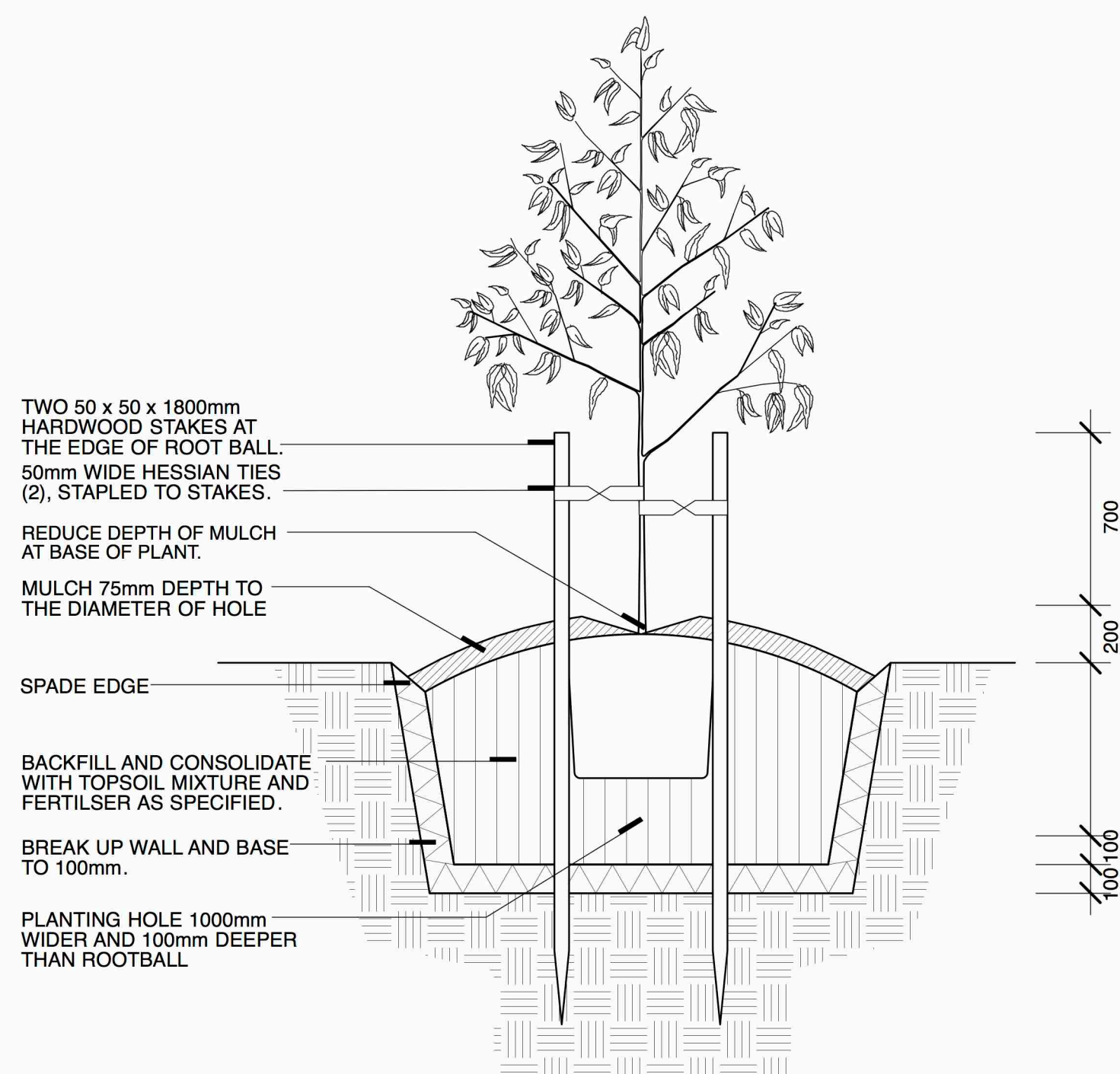
B MASS PLANTING
1:20@A1



C TURF DETAIL
1:10@A1



D TIMBER EDGE DETAIL
1:10@A1



G TYPICAL TREE PIT DETAIL
1:20@A1

SPECIFICATION NOTES

SITE PREPARATION / SOIL WORKS
ALL EXISTING TREES MARKED FOR RETENTION SHALL BE PROTECTED FOR THE DURATION OF THE BUILDING WORKS. REMOVE FROM SITE ALL PERENNIAL WEEDS SUCH AS OXALIS, ONION WEED AND THE LIKE.

NO REGRADING IS TO BE CARRIED OUT WITHIN THE DRIPLINE OF THE TREES TO BE RETAINED. WHERE EXCAVATION IS NECESSARY USE HAND METHODS TO AVOID DAMAGE TO THE ROOT SYSTEM DO NOT CUT ROOTS GREATER THAN 50MM. CUT ROOTS CLEANLY WITH A SAW AND DO NOT SEAL THE WOUND.

TREE PROTECTION
PROTECT ALL EXISTING TREES AS NOTED ON THE DRAWINGS FOR THE DURING OF THE BUILDING WORKS.

TAKE ALL NECESSARY PRECAUTIONS, INCLUDING THE FOLLOWING:

Tree Protection fence:
INSTALL A TREE PROTECTION FENCES AT THE MAXIMUM RADIUS ALLOWABLE TO ACCOMMODATE THE PROPOSED DEVELOPMENT. MAINTAIN THE FENCE FOR THE DURATION OF THE BUILDING WORKS.

CONSTRUCT THE FENCE 1.8 M HIGH WITH CHAINWIRE MESH ON STEEL POSTS. ALL AREAS WITHIN THE PERIMETER OF THE FENCE ARE TO BE COVERED TO A DEPTH OF 100MM WITH WOODCHIP MULCH.

Temporary Irrigation:
INSTALL A TEMPORARY IRRIGATION SYSTEM TO ALL TREES TO BE RETAINED. INSTALL DRIP EMITTERS ON POLY LATERALS. THE IRRIGATION SYSTEM IS TO BE CONTROLLED BY A GALCON OR SIMILAR AUTOMATIC CONTROLLER.

Harmful materials:
DO NOT STORE, STOCKPILE, DUMP OR OTHERWISE REPLACE UNDER OR NEAR TREES, BULK MATERIALS AND HARMFUL MATERIALS INCLUDING OIL, PAINT, WASTE CONCRETE, CLEARINGS, BOULDERS AND THE LIKE. DO NOT PLACE SPOIL FROM EXCAVATIONS AGAINST TREE TRUNKS, EVEN FOR SHORT PERIODS. PREVENT WIND-BLOWN MATERIALS SUCH AS CEMENT FROM HARMING TREES AND PLANTS.

Damage:
PREVENT DAMAGE TO TREE BARK. DO NOT ATTACH STAYS, GUYS AND THE LIKE TO TREES.

Work under trees:
DO NOT REMOVE TOPSOIL FROM WITHIN THE DRIP LINE OF TREES UNLESS OTHERWISE SPECIFIED. IF IT IS NECESSARY TO EXCAVATE WITHIN THE DRIP LINE, USE HAND METHODS SUCH THAT ROOT SYSTEMS ARE PRESERVED INTACT AND UNDAMAGED.

Roots:
DO NOT CUT TREE ROOTS EXCEEDING 50 MM DIAMETER UNLESS PERMITTED BY THE SUPERINTENDENT. WHERE IT IS NECESSARY TO CUT TREE ROOTS, USE A CHAIN SAW OR SIMILAR MEANS SUCH THAT THE CUTTING DOES NOT UNDULY DISTURB OR ROCK THE REMAINING ROOT SYSTEM. IMMEDIATELY AFTER CUTTING, APPLY AN APPROVED BITUMINOUS FUNGICIDAL SEALANT TO THE CUT SURFACE TO PREVENT THE INCURSION OF ROT OR DISEASE.

Compacted Ground:
AVOID COMPACTION OF THE GROUND UNDER TREES. IF THE GROUND UNDER TREES HAS BEEN UNDULY COMPACTED DURING THE WORK UNDER THE CONTRACT, FOR EXAMPLE BY THE OPERATION OF HEAVY CONSTRUCTIONAL PLANT, LOOSEN THE SOIL BY CORING.

SOIL WORKS
THOROUGHLY CULTIVATE THE SUBSOIL TO A DEPTH OF 150MM. SUPPLY AND INSTALL THE FOLLOWING SOIL MIXES TO THE SPECIFIED DEPTHS:

SOIL DEPTH	
• TURF	200MM
• PLANTING	300MM
SOIL MIX A	
• BLACK LOAM	60%
• COARSE WASHED RIVER SAND	30%
• ORGANIC MIX /COMPOST	10%
• ORGANIC LAYER 50 MM DEEP	
CULTIVATE A 50MM LAYER OF ORGANIC ADDMIX INTO THE TOP 100MM OF SOILMIX	
Addmix composition	
• TREATED HARDWOOD SAWDUST	30%
• PINE PARK FINES	40%
• COMPOSTED MANURE	30%

SOIL MIX B	
• SITE TOPSOIL IF AVAILABLE OR IMPORTED MIX OF:	
• BLACK LOAM	70%
• COARSE WASHED RIVER SAND	30%

TREE PLANTING AREAS TO BE MOUNDED 300 MM ABOVE THE EXISTING GROUND LINE TO IMPROVE DRAINAGE FROM PLANTING HOLES. TREE HOLES TO BE EXCAVATED 2 TIMES LARGER THAN THE ROOTBALL AND BACKFILLED WITH SOIL MIX AS SPECIFIED ABOVE.

TURFED AREAS
APPLY SHIRLEYS NO17 LAWN FERTILISER TO SOIL APPLIED IN ACCORDANCE WITH THE MANUFACTURERS INSTRUCTIONS. TURF SHALL BE:

- **GREENLEAS COUCH** WITH AN EVEN THICKNESS OF 30MM.

DO NOT LET TURF DRY OUT. LIGHTLY TOP DRESS TURF 6 WEEKS AFTER LAYING WITH 10MM IMPORTED TOPSOIL THATCH TO BE LAID WITH STAGGERED JOINTS, FLUSH WITH PATHWAY LEVELS.

MULCH
SUPPLY AND PLACE 75 MM LAYER OF HARDWOOD HORTICULTURAL GRADE MULCH, (GRADED IN SIZE 15 MM X 15MM X 15MM, FREE FROM WOOD SLIVERS). SET DOWN 25MM FROM ADJACENT PAVING.

PLANT MATERIALS
ALL PLANTS SHALL BE TRUE TO TYPE, OF HEALTHY GROWTH DISEASE FREE NURSERY STOCK AND NOT DISPLAYING RESTRICTED GROWTH PATTERNS. SHOULD THERE BE A REQUIREMENT FOR SUBSTITUTIONS THEY SHALL NOT CHANGED WITHOUT PRIOR APPROVAL OF THE LANDSCAPE ARCHITECT. NO VARIEGATED STRAIN SHALL BE USED. ALLOW FOR SLOW RELEASE FERTILISER TO ALL PLANTS APPLIED AT THE MANUFACTURERS RECOMMENDED RATE TO BE SAME OR SIMILAR TO OSMOCOTE.

FERTILIZER:
MASS PLANTED AREAS : ALLOW 2 SHIRLEYS SLOW RELEASE KOKEI PELLETS PER 5 - 35 LITRE PLANT AND ONE PER 150MM PLANT TURF AREAS : ALLOW SHELLEYS NO.17 LAWN FERTILIZER OR EQUIVALENT , APPLIED IN ACCORDANCE WITH THE MANUFACTURERS INSTRUCTIONS.

STAKES AND TIES
DURABLE HARDWOOD , STRAIGHT, SIZE SHALL BE 50X50X1800 WITH TIES SPACED APPROXIMATELY 300MM APART. DRIVE STAKES 600MM INTO THE GROUND ON THE WINDWARD SIDE OF THE PLANT. TIES SHALL BE 50MM HESSIAN WEBBING FIXED IN A FIGURE OF EIGHT PATTERN.

PLANT ESTABLISHMENT PERIOD
FROM THE DATE OF PRACTICAL COMPLETION , THERE SHALL BE A PERIOD OF 52 WEEKS FOR THE PLANTING ESTABLISHMENT PERIOD. ANY FAILED PLANTS SHALL BE REPLACED WITH THE SAME TYPE AND SPECIES. THE MULCHED SURFACES SHALL BE MAINTAINED IN A NEAT AND TIDY CONDITION, STAKES AND TIES SHALL BE ADJUSTED AS REQUIRED AND THE TURF SHALL BE REGULARLY MOWED TO MAINTAIN A HEALTHY GROUND COVER. A CONSTANT WATER REGIME SHALL BE MAINTAINED TO ENSURE HEALTHY GROWTH OF ALL PLANT MATERIAL.

IRRIGATION
ALL PLANTING AREAS TO BE SUPPLIED WITH A FULLY AUTOMATIC DRIP IRRIGATION SYSTEM EQUIVALENT TO 'NETAFIM'. THE IRRIGATION SYSTEM SHALL MEET ALL THE REQUIREMENTS OF THE WATER AND ELECTRICITY SUPPLY AUTHORITY AND RELEVANT AUSTRALIAN STANDARDS. PROVIDE RICHDEL OR SIMILAR APPROVED CONTROLLER. CONNECTION TO SYDNEY WATER MAINS TO BE THROUGH AN APPROVED REDUCED PRESSURE ZONE DEVICE INSTALLED TO WATER REGULATIONS.